



Orange, Slovakia



PRE, Prague

Our products have been installed in nineteen countries around the world. A selection of several important implementations:

You can find a detailed description of our installations, including photos and other details, at www.am-interier.cz, in the implementation section. The site also has a German and English language version.

- VELAA PRIVATE ISLAND, FUSHIVELAVARU NOONU ATOLL, Republic of the Maldives
- Complete reconstruction of the CZECH NATIONAL BANK headquarters
- GOOGLE CZECH REPUBLIC, s. r. o.
- DELOITTE OFFICES – NILE HOUSE, Prague 8
- IBM headquarters in Moscow, Russian Federation
- PPF GATE – headquarters of PPF financial group in Prague
- LENOVO BRATISLAVA, Slovakia
- WHITE & CASE, Prague
- CLIFFORD CHANCE, Prague
- Furnishing of DREI stores – Austria
- Furnishing of HUAWEI chain stores – Austria, Hungary
- Baťa chain, Czech Republic and Slovakia
- LEIA – store furnishing, Great Britain
- J & T BANK MOSCOW, Russian Federation
- Bank of Georgia – Tbilisi, Georgia
- BALTSCHUG Kempinski Hotel Moscow – Moscow, Russian Federation
- Hotel MARTINEZ Canes, France
- Hotel SIR NIKOLAJ – Hamburg, Germany
- AMFORA Hotel and RIVA Hotel – Hvar Island, Croatia
- O2 Arena Prague
- Mariinsky Theatre in St. Petersburg and Alexandriskiy Theatre in St. Petersburg – St. Petersburg, Russian Federation
- Old Town Hall in Prague – Ceremonial hall
- Palace of International Forums in Tashkent, Uzbekistan
- Consulate of the Czech Republic in Munich
- Embassy of the Czech Republic in Georgia – Tbilisi, Georgia

PROPOSALS, PRODUCTION
AND COMPLETE
INTERIOR SUPPLIES

www.am-interier.cz



AM INTERIÉR, a. s.
Záhumení V 322, Louky
763 02 Zlín

Palác Fénix
Václavské náměstí 802/56
110 00 Praha 1





AM INTERIÉR

PROPOSALS, PRODUCTION
AND COMPLETE
INTERIOR SUPPLIES



HOME & COOK, Prague

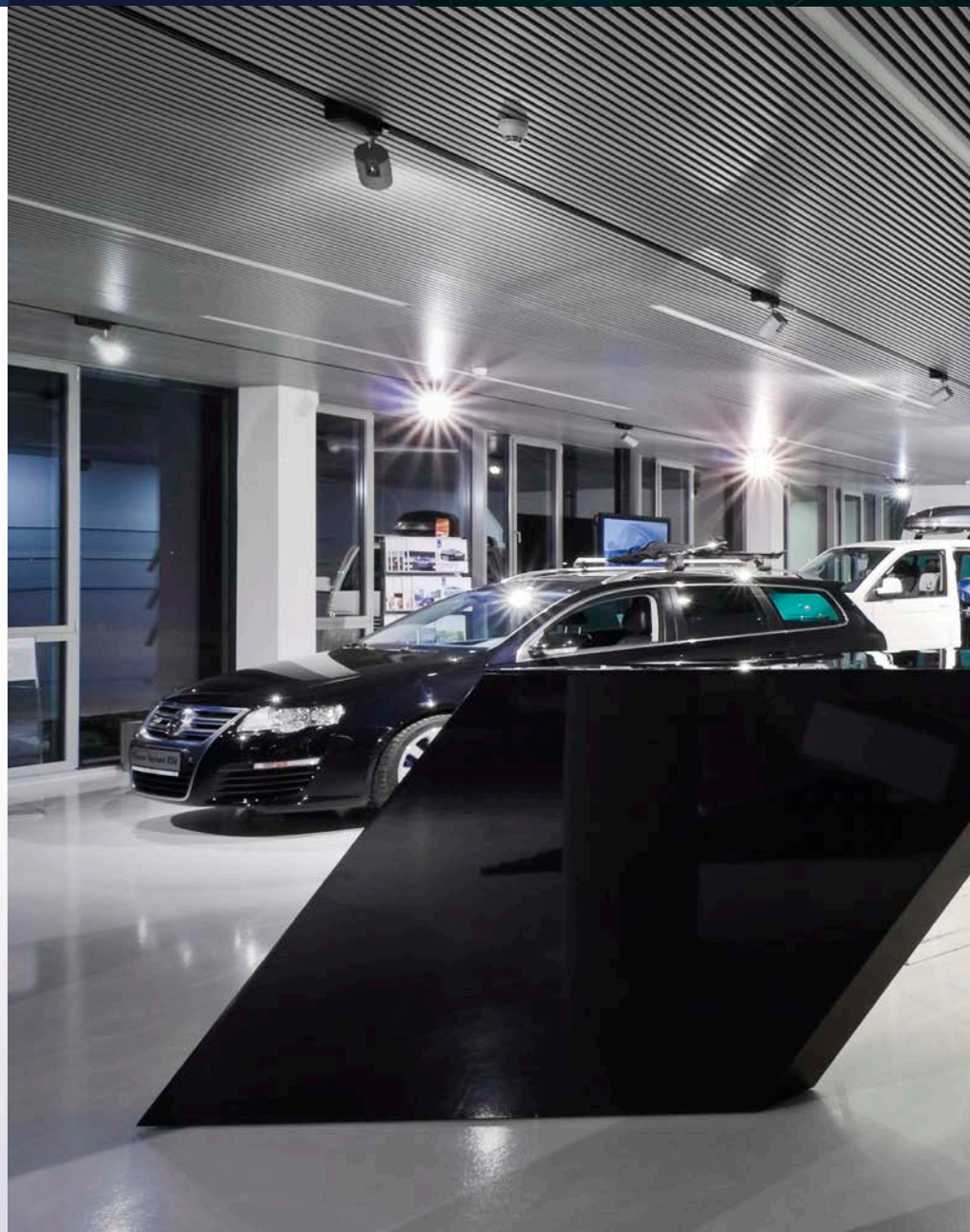


Consulate of the Czech Republic, Munich

AM INTERIÉR, a. s.

is a company with great experience in the field of furniture production and interior furnishing of the highest standard.

The Company's manufacturing plant and headquarters are located in the Zlín-Louky industrial zone. The main manufacturing programme is the production and installation of atypical furniture according to the design of an architect or our in-house design studio.





Bata, Zlín



Hotel Sir Nikolaj, Hamburg



Import Volkswagen Group, Prague

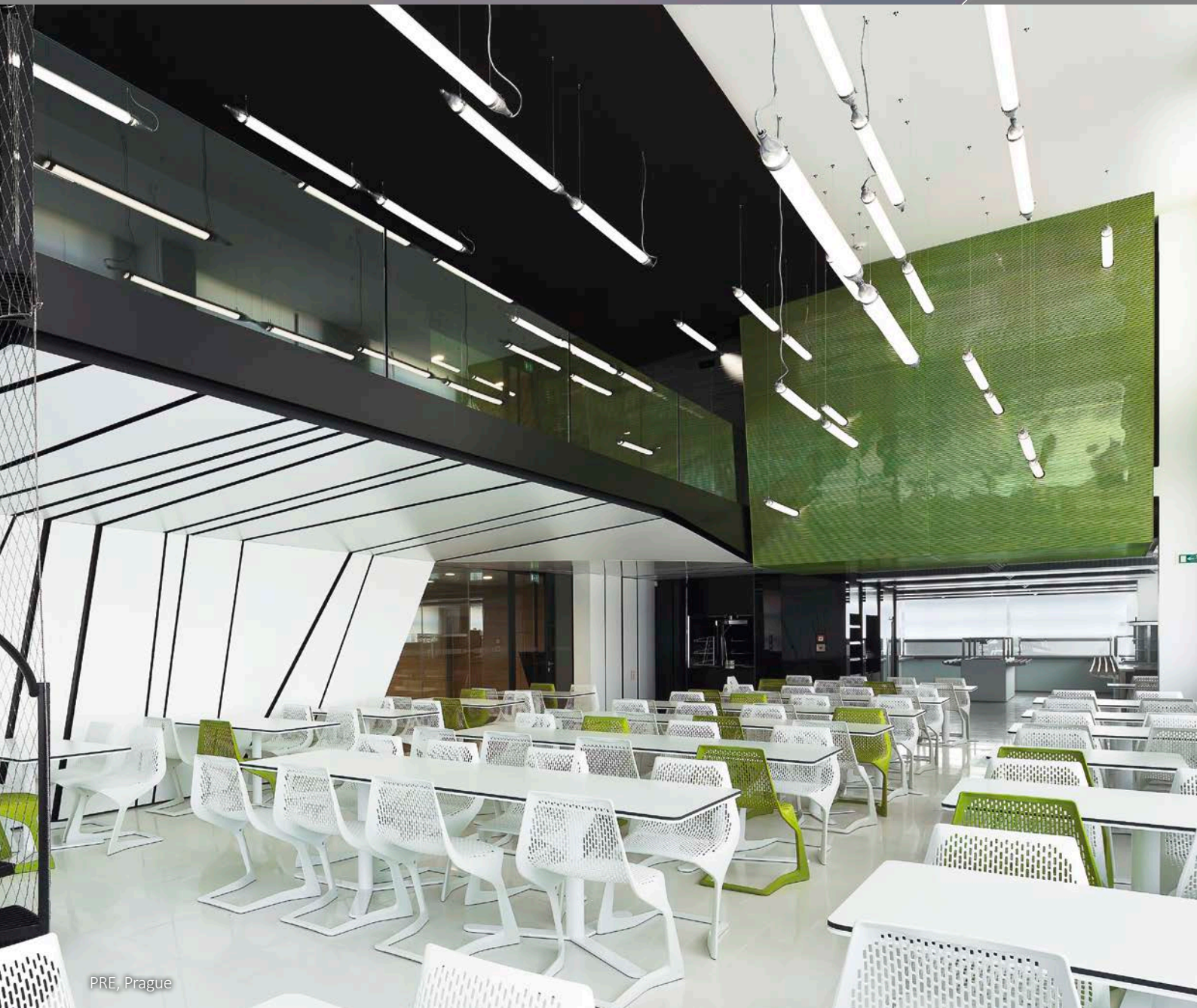


Hutchison Drei Austria

The Company also delivers and installs unique interior elements (chairs, office furniture, flooring, lighting, etc.) based on the regional representation of manufacturers. The Company can also offer extensive experience in the area of atypical structural joinery production for interiors (atypical interior doors, stairs, cladding, replicas of vintage doors, etc.). The Company also manufactures fire-resistant doors with certified DP3-type design.



Bank ČSOB, Bratislava



PRE, Prague



ČEZ, Prague

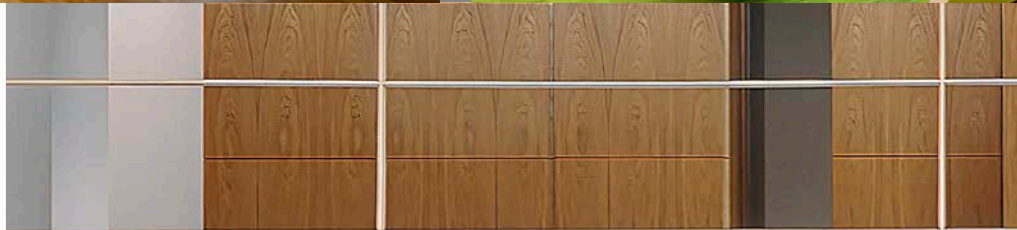


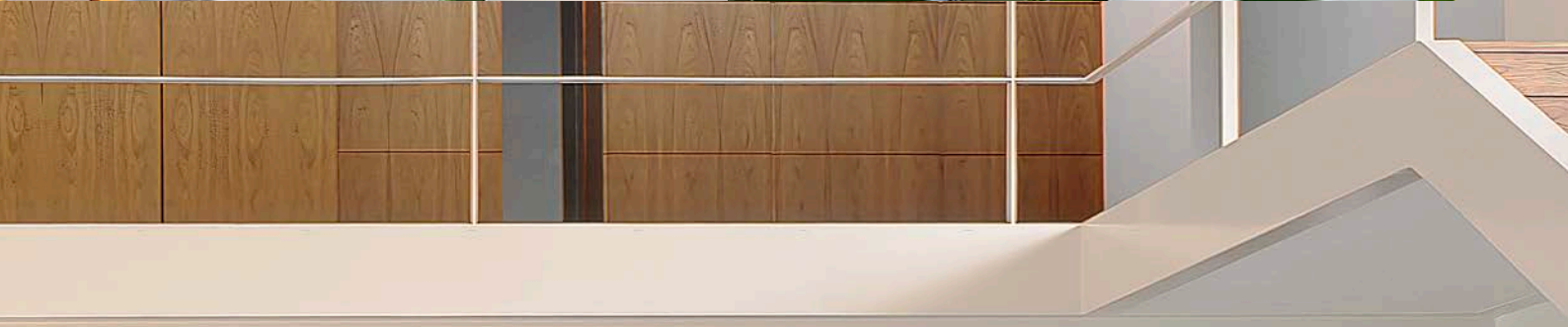
Clifford Chance, Prague



Google, Prague

The furniture production itself takes place in recently refurbished halls, which are equipped with state-of-the-art technology for the milling, assembly and surface finishing of all wooden furniture. Large-scale materials from renowned European manufacturers of agglomerated materials are prepared on the basis of specific orders (Egger, Pfleiderer, Kaindl, Kronospan, etc.). Technical and personal assets allow us to work with veneers, solid wood, compact laminate and artificial stone as well. A state-of-the-art paint shop is used for a perfect surface finish.

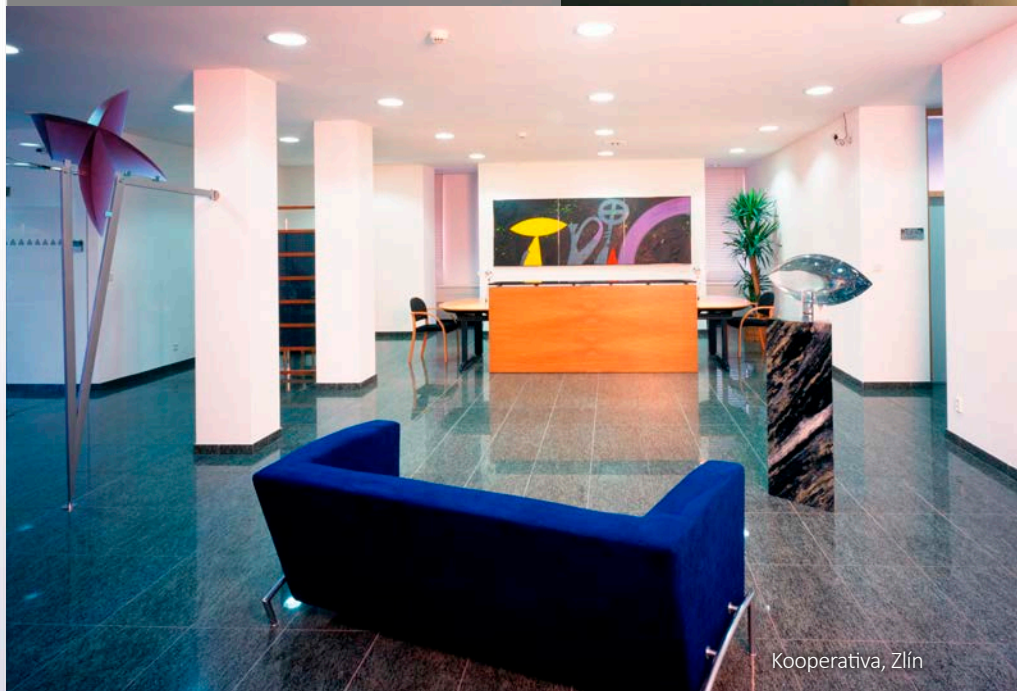
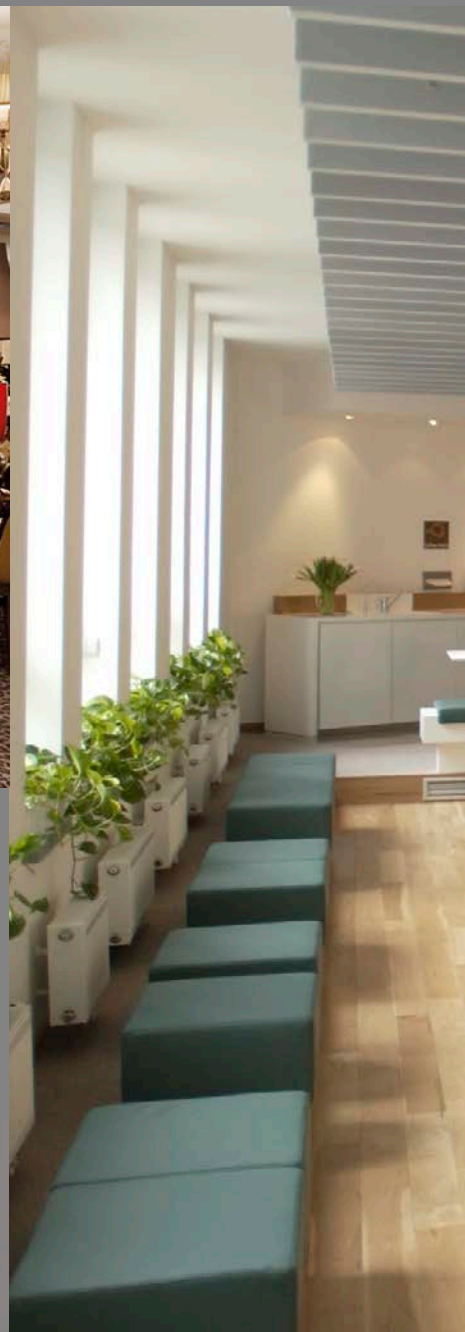






Hotel Baltšug- Kempinski

Completion of products with atypical metal elements, cooperation with an upholsterer and the eventual electrification of furniture by a certified professional during the implementation of atypical interiors is commonplace. Great emphasis is placed on the precise processing of manufacturing documentation, which is prepared by a group of experienced designers from the job preparation department. Prior to production the manufacturing documentation, with specified materials, metal fittings and the appearance of the product, must be discussed and approved by a responsible representative of the investor.



Kooperativa, Zlín



Deloitte, Prague



WHITE & CASE PRAGUE



Hotel, Maldives

In order to achieve the maximum satisfaction of our customers we have introduced a certified quality management system according to ČSN EN ISO 9001:2009 and publicly declared this quality policy.



Eurest Bank, Austria



Villa Hvozdná



Ceremonial hall, Prague